

AUGUST 11 - 24 2009

## SHOPPING CENTERS

**LIBERTY TRAVEL RECENTLY TAKES THREE SPACES IN MANHATTAN**

# Meer of Friedland Realty closes three leases valued in excess of \$6m

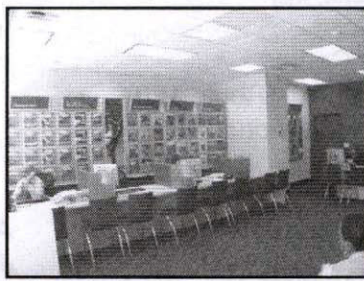
**MANHATTAN, NY** Friedland Realty, Inc., the New York City satellite office of NAI Friedland Realty



**Gene Meer**

recently closed three lease deals for Liberty Travel with a combined aggregate retail value in excess of \$6 million. Gene Meer, president of Friedland Realty, Inc., handled the transactions and is the exclusive broker for Liberty Travel.

The most recent lease, at 1425



**635 Madison Ave., Manhattan**

Second Ave., was for 1,200 s/f of space from World Wide Holdings. Meer also brokered deals at 1365 Sixth Ave. and 86 Nassau St. The average Liberty Travel store size is between 1,000 to 1,500 s/f. All three locations are expected to open shortly.

Liberty Travel relied on Meer's extensive market knowledge to guide them in their real estate search and negotiations. "This was the ideal time for Liberty Travel to take advantage of the softer Manhattan retail market," said Meer. "Right now they are looking for more sites to expand their Manhattan presence. We are currently in negotiations with various landlords."

"Liberty Travel recently created a sleek design for their new stores to attract customers," said Meer.

***to comment on this story  
visit [nyrej.com](http://nyrej.com)***